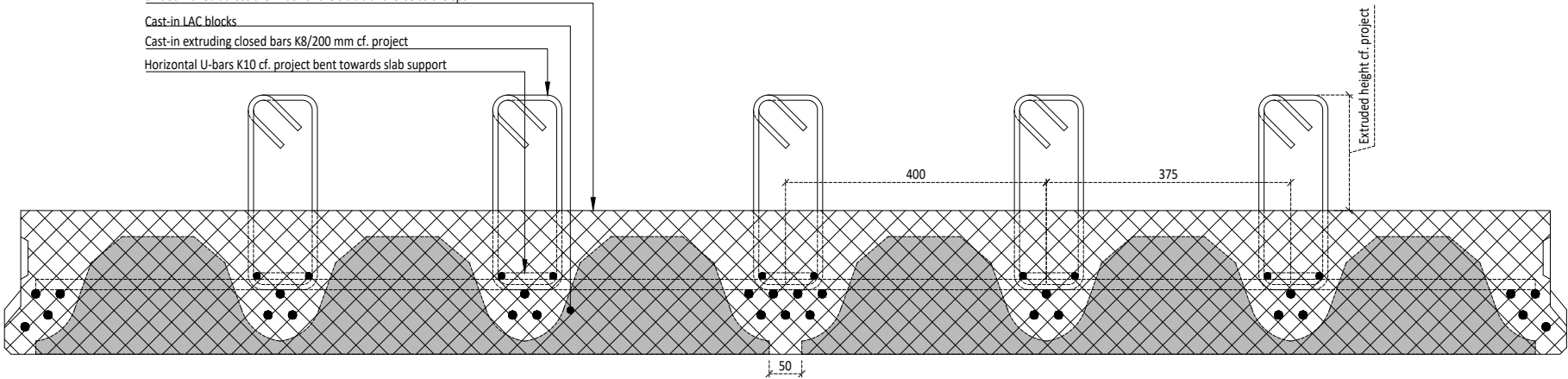


Detail - Cross section

1:10

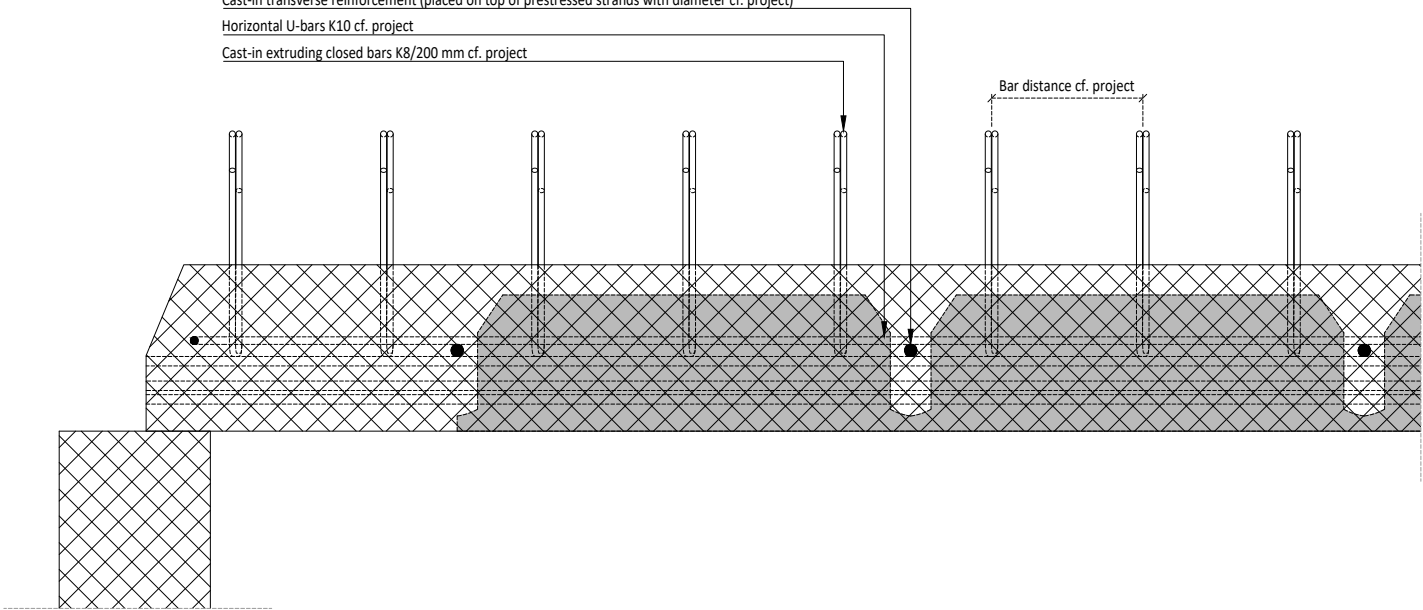
SL-deck raked across the width of the slab transverse to the span
Cast-in LAC blocks
Cast-in extruding closed bars K8/200 mm cf. project
Horizontal U-bars K10 cf. project bent towards slab support



Detail - Longitudinal section

1:10

Cast-in transverse reinforcement (placed on top of prestressed strands with diameter cf. project)
Horizontal U-bars K10 cf. project
Cast-in extruding closed bars K8/200 mm cf. project



SL-deck surface raked transversely to slab span for a shear transferring rough casting joint

