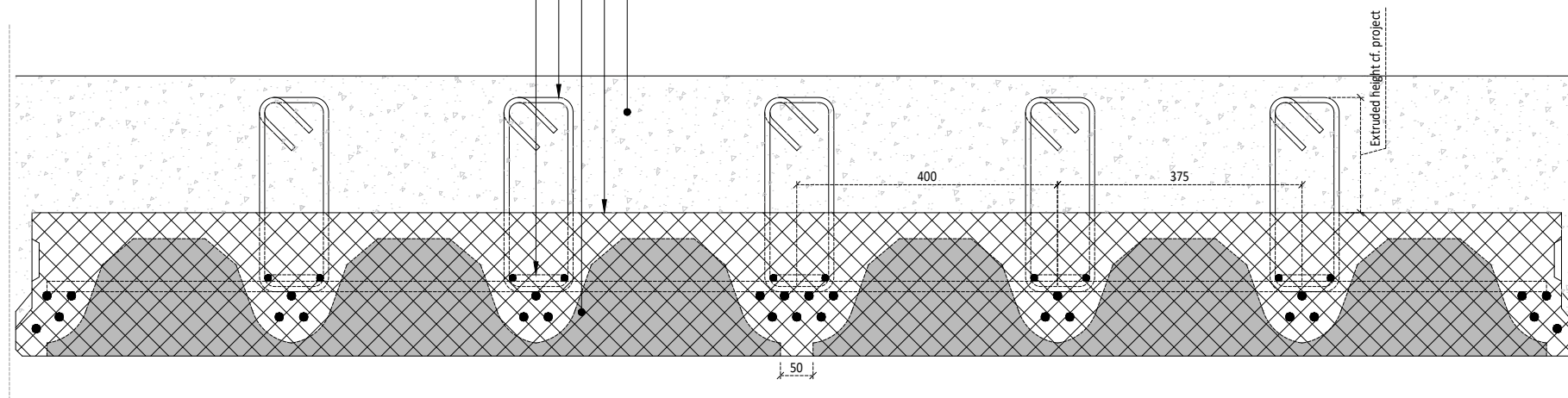


**Detail - Cross section**

1:10

- Upper layer of concrete cast on-site with thickness and reinforcement cf. project
- SL-deck raked across the width of the slab transverse to the span
- Cast-in LAC blocks
- Cast-in extruding closed bars K8/200 mm cf. project
- Horizontal U-bars K10 cf. project bent towards slab support



**Detail - Longitudinal section**

1:10

- Cast-in transverse reinforcement (placed on top of prestressed strands with diameter cf. project)
- Horizontal U-bars K10 cf. project
- Cast-in extruding closed bars K8/200 mm cf. project
- Upper layer of concrete cast on-site with thickness and reinforcement cf. project

